

Índice:

1. Esquemático jerárquico
2. RS485
3. USB OTG
4. GPIO
5. Fuente de alimentación
6. On Board IO
7. CPU

Fiduciales

TOP

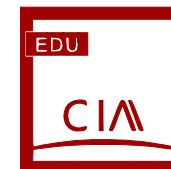
×○ F1  
×○ F2  
×○ F3

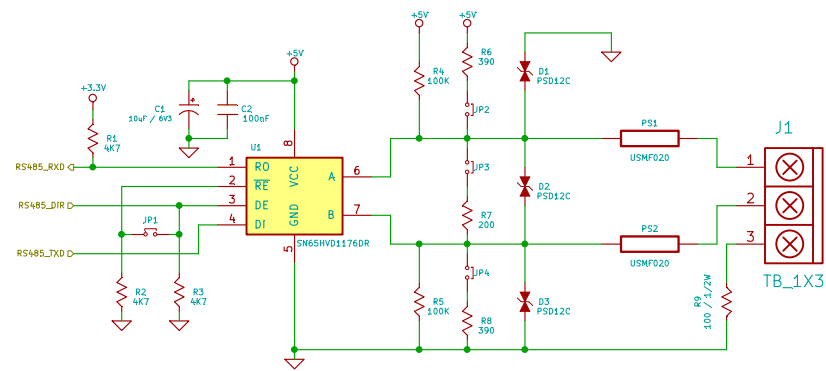
BOTTOM

×○ F4  
×○ F5  
×○ F6

Holes

×○ H1  
×○ H2  
×○ H3  
×○ H4

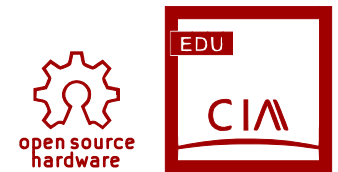




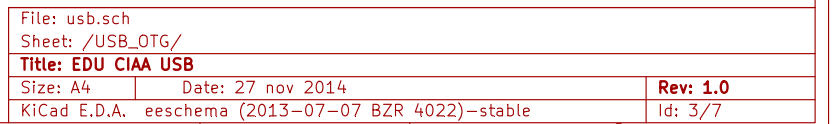
De acuerdo a Fig 27 de la AN: slla070d de TI.

JP1, JP2, JP4: cortocircuitar en caso que sea el último nodo de la red.

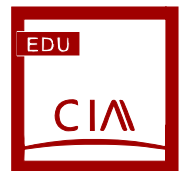
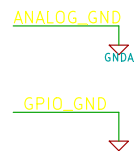
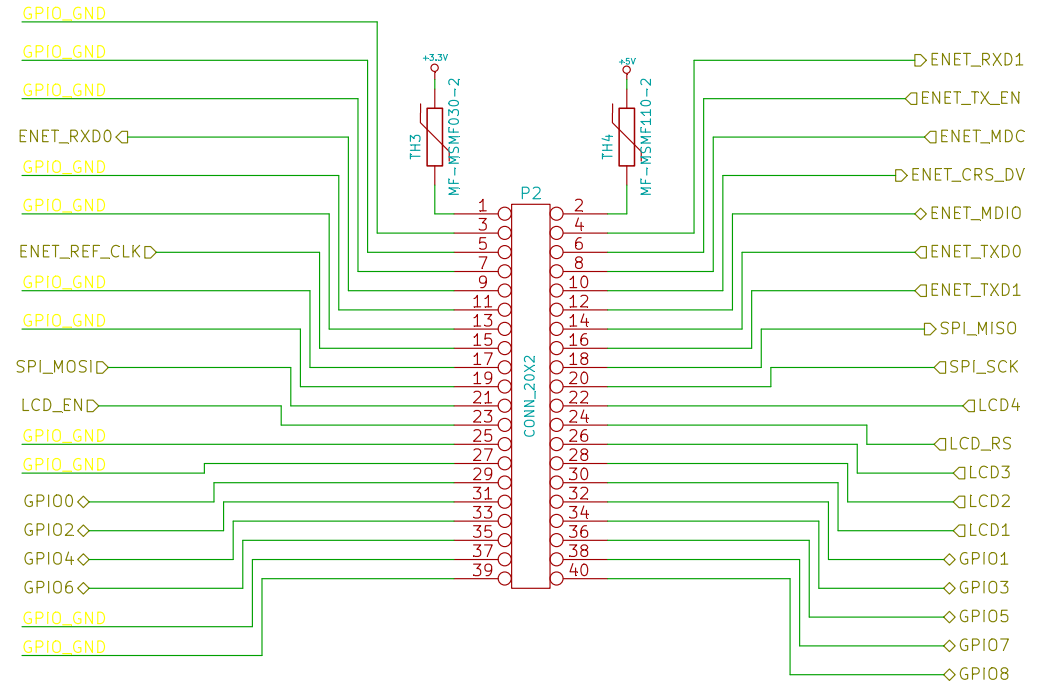
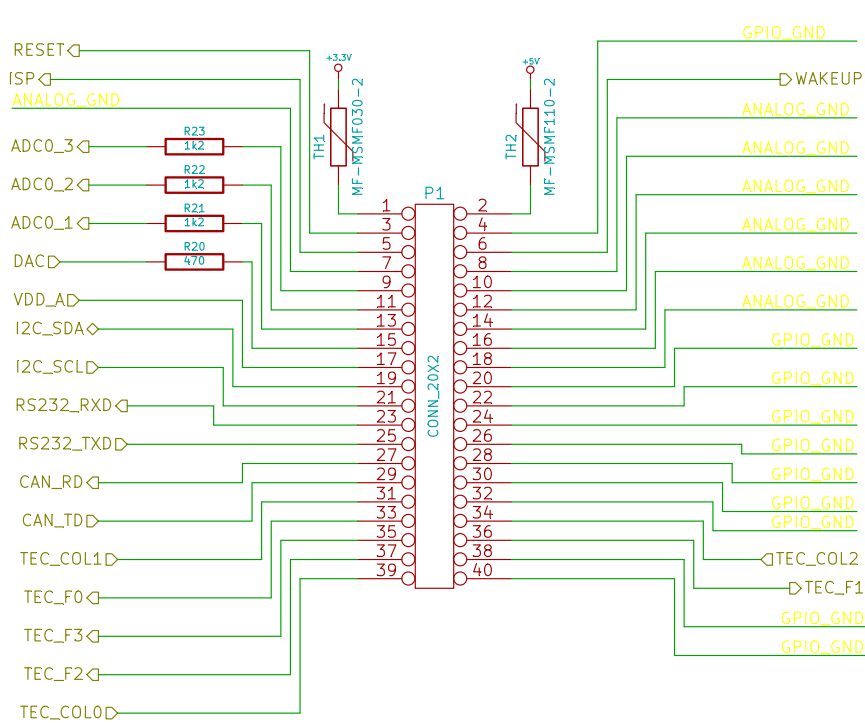
RS485



File: rsS485_can.sch		
Sheet: /RS485/		
<b>Title: EDU CIAA RS485</b>		
Size: A4	Date: 27 nov 2014	Rev: 1.0
KiCad E.D.A. eeschema (2013-07-07 BZR 4022)-stable		Id: 2/7

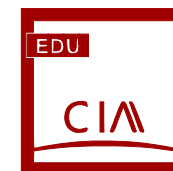
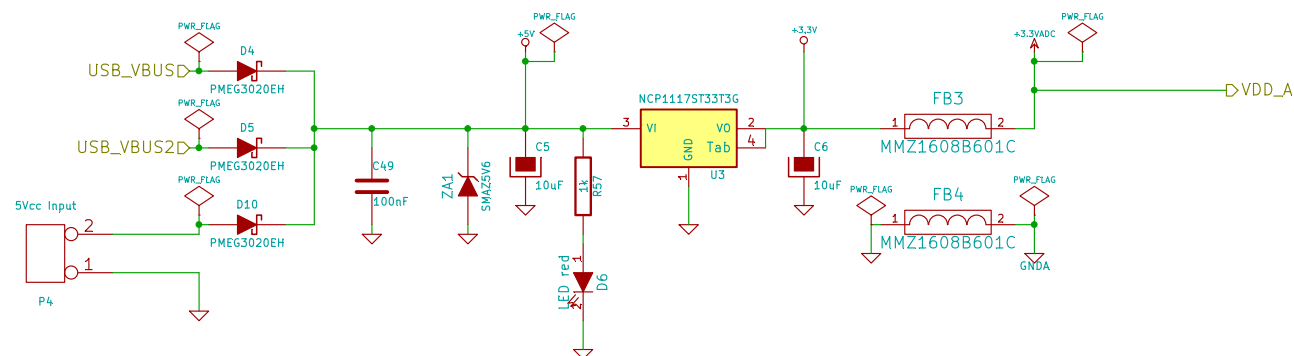


Conectores de expansión LVTTL.  
En formato de pines, 2.54mm de pitch.

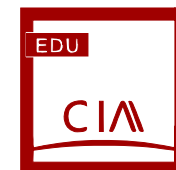
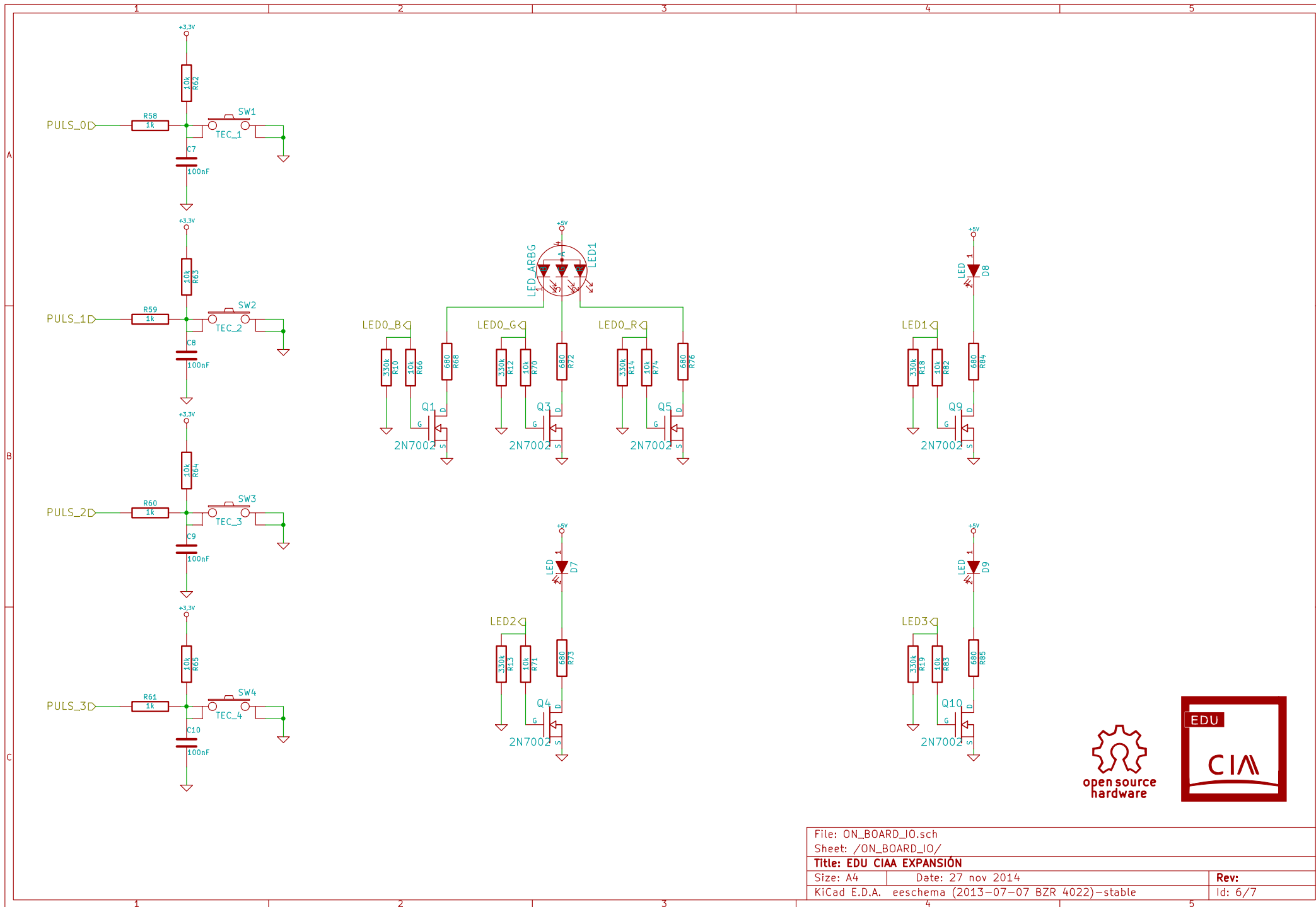


File: gpio.sch		
Sheet: /GPIO/		
Title: EDU CIAA GPIO		
Size: A4	Date: 27 nov 2014	Rev: 1.0
KiCad E.D.A. eeschema (2013-07-07 BZR 4022)-stable		Id: 4/7

Fuente de alimentación a través de los puertos USB  
o de la entrada de 5V  
Tensiones de salida: 5V y 3.3V



File: fuente.sch		
Sheet: /Fuente/		
<b>Title: EDU CIAA Fuente de alimentación</b>		
Size: A4	Date: 27 nov 2014	Rev: 1.0
KiCad E.D.A. eschema (2013-07-07 BZR 4022)-stable		Id: 5/7



File: ON_BOARD_IO.sch		
Sheet: /ON_BOARD_IO/		
Title: EDU CIAA EXPANSIÓN		
Size: A4	Date: 27 nov 2014	Rev:
KiCad E.D.A. eeschema (2013-07-07 BZR 4022)-stable		Id: 6/7

